

The Skyline Collection

gh20, glasgow harbour

Glasgow
Harbour

The Skyline Collection

— *gh20, glasgow harbour* —

Where Waterfront Living Meets Glasgow's Vibrant West End



The Skyline Collection



The Collection

THE SKYLINE COLLECTION SITUATED ON THE 14TH AND 15TH FLOORS AT GH20, IS SYNONYMOUS WITH LUXURIOUS CONTEMPORARY WATERSIDE LIVING.

each of the penthouse and sub-penthouse apartments, which make up the skyline collection, offer unsurpassed views over glasgow and the river clyde and have been designed and finished to the most exacting standards.

the elegance and style of these apartments is extended through to its specification, with contemporary bathroom fittings, integrated kitchen appliances and the opportunity for a state of the art integrated bang and olufsen sound system.

each apartment in the skyline collection benefits from dual aspect, floor to ceiling windows and generous glass clad balconies that extend the living space with the pièce de résistance being a spectacular, private rooftop terrace, offering the perfect entertainment setting on a sunny day.

the skyline collection at gh20 epitomises true aspirational living and with such chic sophistication, these penthouses exemplify the true meaning of living the high life.



The Development

A VISUALLY STRIKING COLLECTION OF 770 CONTEMPORARY APARTMENTS, GH20 HAS BEEN DESIGNED BY RENOWNED AWARD-WINNING ARCHITECTS GORDON MURRAY AND ALAN DUNLOP TO APPEAL TO THE DESIGN CONSCIOUS. INNOVATIVE MATERIALS INCLUDING BLACK GRANITE AND COPPER CLADDING OFFER AN EYE-CATCHING SYMBOL OF MODERN CITY LIVING, APPEALING TO THOSE LOOKING FOR A CONTEMPORARY HOME IN A PRESTIGIOUS CENTRAL LOCATION.

the developments iconic buildings, which reach the heady heights of 22 storeys, offer buyers 21 different apartment styles that have been specifically designed to ensure that 95% boast fantastic views of the river clyde.

lifestyle is highly regarded within the collection of apartments at gh2o which feature private underground parking and modern landscaped gardens. gh2o's tranquil communal gardens on the banks of the river clyde feature a large lawned area, contemporary planters and seating, providing residents with a peaceful sanctuary to appreciate all that waterside living has to offer. situated within the centre of each of the apartment blocks, the contemporary gardens extend onto the promenade, merging the natural beauty of the river with the modern and contemporary architecture of this impressive development.

Location, Location, Location

SITUATED ON THE BANKS OF THE RIVER CLYDE BETWEEN THE BUSTLING CITY CENTRE AND THE CITY'S MOST DESIRABLE RESIDENTIAL ADDRESS OF THE WEST END, GH20 IS PERFECTLY POSITIONED TO CAPTURE THE ESSENCE OF CONTEMPORARY LIVING, WITH THE TRANQUILITY OF A WATERFRONT LOCATION.

the enviable position allows gh20 residents to recline in the relaxing surroundings of the waterfront and take advantage of the tranquil setting, yet the city centre and the fashionable west end are both within easy reach. train, subway and bus services are accessible from partick interchange, a leisurely 5 minute walk away from gh20 and there is also greatly improved pedestrian access, including a walk along the promenade adjacent to the clyde which, upon completion, will lead directly to the heart of glasgow city centre.

glasgow boasts the uk's premier retail offering outside of london, with an abundance of the coolest bars, fine dining restaurants, a bustling café culture and diverse nightlife - all within 10 minutes of your city oasis.

glasgow also has a wealth of world class museums and art galleries to cater for those seeking culture and for music and comedy lovers, glasgow plays host to annual jazz and comedy festivals.

the west end with its leafy cobbled lanes lined with bars and bespoke boutiques is just a short stroll away. this historic 'dear green place' created in the late 1800s boasts the beautiful botanic gardens and glasgow university and has a vibrancy of its very own.

as far as luxury waterfront living goes, there is no greater statement of contemporary urban chic than gh20 at glasgow harbour.



*Where luxury waterfront living meets
Glasgow's vibrant West End...*

Specification

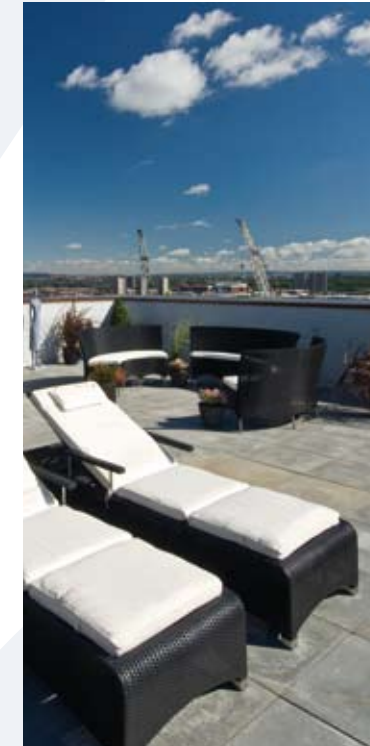
THE SKYLINE COLLECTION APARTMENTS HAVE BEEN METICULOUSLY DESIGNED TO CREATE SPACIOUS, LOW MAINTENANCE, YET HIGH QUALITY CONTEMPORARY HOMES THAT FACILITATE MODERN URBAN LIVING.

floor to ceiling windows maximize light into the apartment but also allow you to take full advantage of the views over the river Clyde and Glasgow. generous balconies and large roof top terraces extend the living space and allow luxurious outdoor dining and relaxation.

opulent and understated, each apartment in the skyline collection contains a contemporary kitchen with integrated Neff appliances and spacious bedrooms equipped with an en-suite bathroom to the master bedroom and generous built-in wardrobes.

the penthouse apartments exude extravagance with state-of-the-art, bespoke kitchens incorporating granite worktops and quantum ovens. the penthouses also benefit from en-suite bathrooms to both bedrooms, even the lighting in the penthouse has been carefully considered with contemporary LCD touch screen controls, allowing you to set the mood and create a perfect and unique ambience to suit any occasion.

enjoy the highest quality of living with *The Skyline Collection* at gh2o



Internal Specification

GENERAL

- timber laminated faced entrance doors
- white painted internal doors with horizontal recess detail
- high quality brushed stainless steel ironmongery throughout
- fitted carpet to hallways, bedrooms, living room and storerooms
- **superior quality carpet**
- **brushed stainless steel sockets throughout**
- **wired for bang and olufsen entertainment system**
(optional purchase of tv, stereo system and integrated speakers)

KITCHEN

- a luxurious and contemporary kitchen design
- integrated neff appliances
- stainless steel sink and drainer
- built-in extractor hood
- upgraded ceramic floor tiles
- **granite worktops**
- **stainless steel quantum oven and ceramic hob**
- **bespoke kitchen units and splashback**
- **kitchen island (apartment 95 in block 1 only)**

BATHROOMS

- imaginatively designed bathrooms
- white sanitary ware with chrome mixer taps
- heated towel rail
- ceramic tiles to floor and wall areas
- **imaginative lighting plan**
- **integrated bang and olufsen speakers**

BEDROOMS

- fitted wardrobes to both bedrooms
- en-suite bathroom to master bedrooms
- **walk-in wardrobe to master bedroom (apartment 95 only)**

LIGHTING

- contemporary lighting plan
- **imaginative lighting plan**
- **lcd touch screens for living room and mood lighting to all other rooms**

STORAGE

- storage within hallway containing plumbing provision for washing machine and hot water cylinder
- **utility room containing a washer/dryer (apartment 95 only)**

HEATING AND POWER

- electric slimline panel heating throughout
- bt sockets to living rooms and master bedrooms
- satellite and tv aerial sockets to living room
- door entry handset with integrated video link
- mechanical extract ventilation

ROOF TERRACE

- paved roof terrace
- outdoor lighting to terrace

BALCONY

- painted balcony floor
- glass modesty panel
- frosted glass balcony end

COMMUNAL AREAS

- refuse chutes at each floor level
- ceramic tiles to reception area with carpet tiles to corridors
- passenger lifts
- 24-hour concierge including cctv and monitoring

denotes a feature of apartment types 94 and 95 only

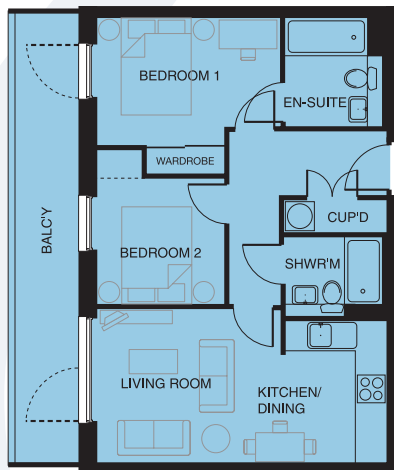
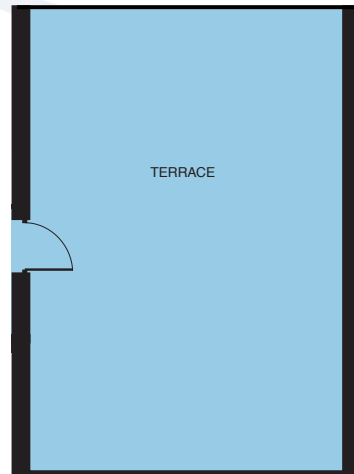


14th Floor Plans



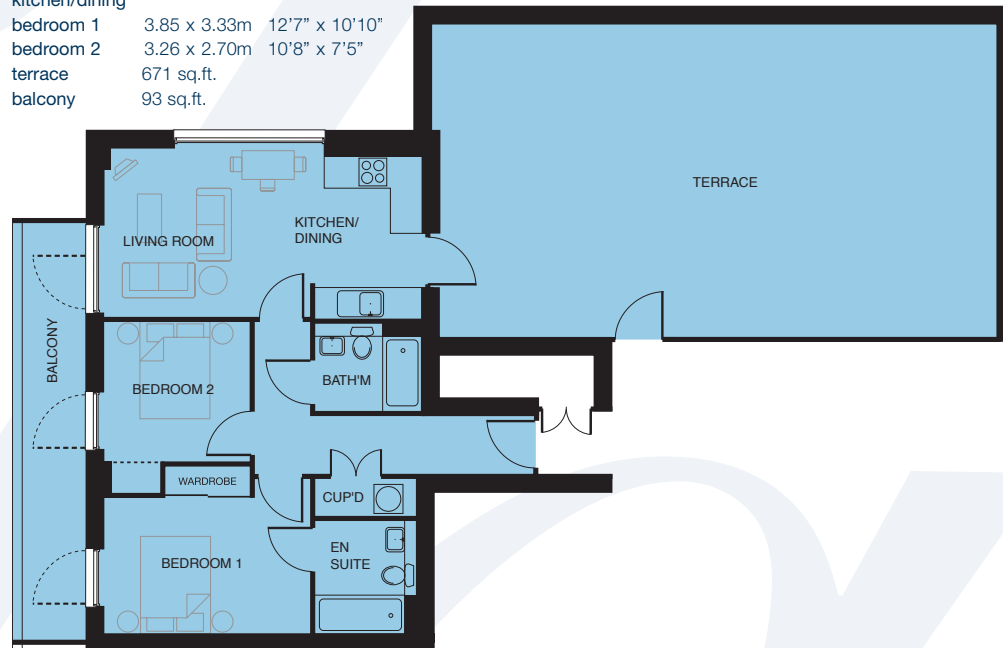
Number 91 - blocks 1 & 3

	living room/ kitchen/dining	5.85 x 3.15m	19'2" x 10'4"
	bedroom 1	3.85 x 3.20m	12'7" x 10'6"
	bedroom 2	3.20 x 2.69m	10'6" x 8'10"
	terrace	343 sq.ft.	
	balcony	129 sq.ft.	



Number 92 - blocks 1 & 3

	living room/ kitchen/dining	5.92 x 3.19m	19'5" x 10'5"
	bedroom 1	3.85 x 3.33m	12'7" x 10'10"
	bedroom 2	3.26 x 2.70m	10'8" x 7'5"
	terrace	671 sq.ft.	
	balcony	93 sq.ft.	



Number 93 - blocks 1 & 3

	living room/ kitchen/dining	5.70 x 3.81m	18'9" x 12'6"
	bedroom 1	3.90 x 3.35m	12'9" x 11'0"
	bedroom 2	3.35 x 2.96m	11'0" x 9'9"
	terrace	638 sq.ft.	
	balcony	80 sq.ft.	



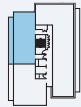
15th Floor Plans



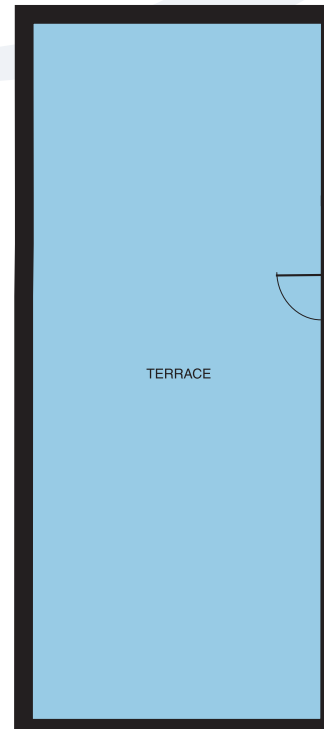
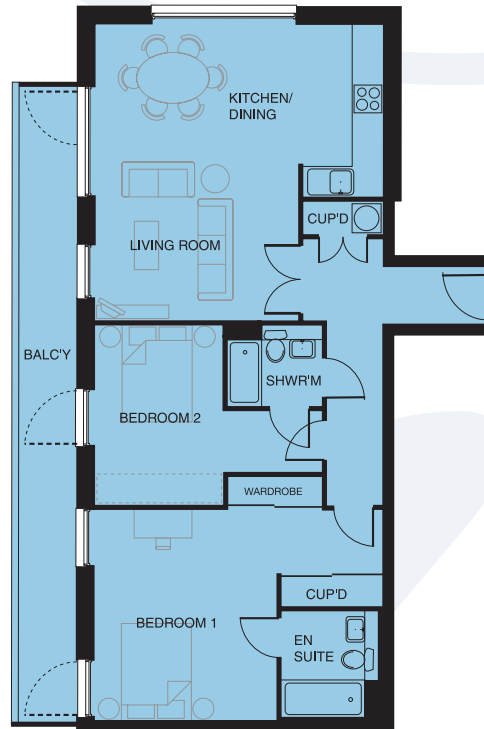
Number 94

living room/ kitchen/dining	6.20 x 5.92m	20'4" x 19'5"
bedroom 1	5.99 x 4.94m	19'8" x 16'2"
bedroom 2	4.79 x 3.68m	15'8" x 12'1"
balcony	170 sq.ft.	
roof terrace	902 sq.ft.	

Blocks 1 & 3



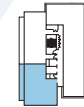
16th Floor Roof Terrace



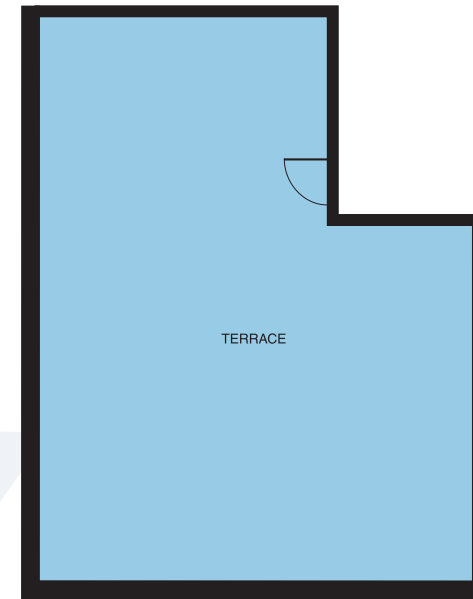
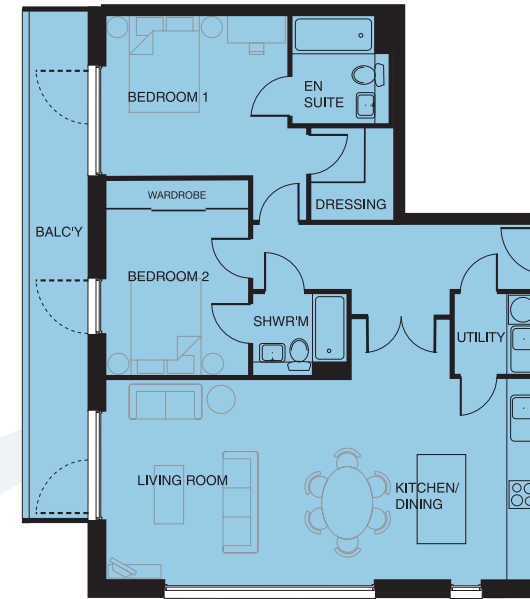
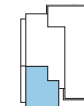
Number 95

living room/ kitchen/dining	8.90 x 4.11m	29'3" x 13'6"
bedroom 1	4.25 x 3.36m	13'11" x 11'1"
bedroom 2	3.96 x 3.04m	13'0" x 10'10"
balcony	137 sq.ft.	
roof terrace	905 sq.ft.	

Blocks 1 & 3

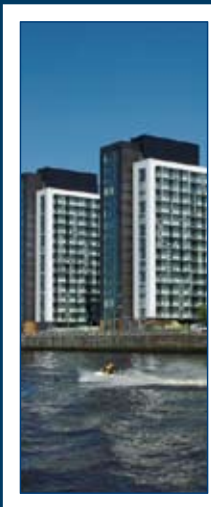
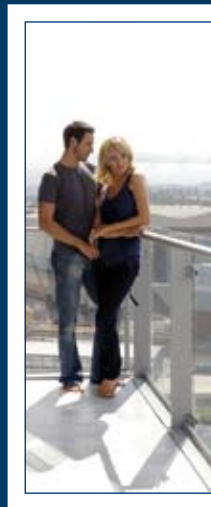
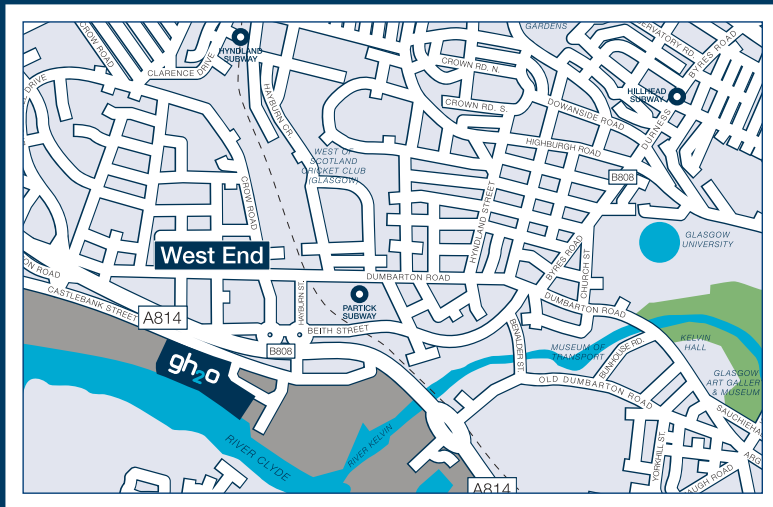


16th Floor Roof Terrace



Find Us...

gh₂o



gh₂o, 1 South Street, Glasgow, G11 6JY

0800 008 7 008

glasgowsales@dandara.com

gh₂o.co.uk

all images indicative only, whilst every effort has been made to ensure that the information contained within this brochure is correct, it is designed specifically as a guide and dandara reserve the right to amend the specification as necessary and without notice. this does not constitute or form any part of a contract or sale. dandara 2007

dandara

gh₂o

The Skyline Collection

0800 008 7 008

gh2o.co.uk

 dandara