

CONTACT

Telephone - 01624 693300

Mobile - 07624 480881

Email - arace@dandara.com



dandara

commercial limited



MARKET STREET
COMMERCIAL
UNITS
1 & 2

PLANNING
APPROVED

DOUGLAS
ISLE OF MAN

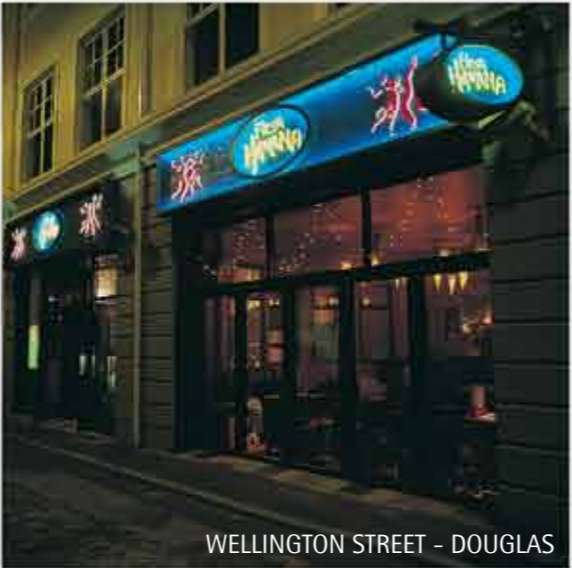
FOR SALE OR TO LET

FOR SALE OR TO LET

6,848ft2 OFFICE / COMMERCIAL/ RETAIL/ LEISURE
ACCOMMODATION

At

THE FORMER GREEBA WORKS, MARKET STREET,
DOUGLAS, ISLE OF MAN



WELLINGTON STREET - DOUGLAS



ST GEORGES COURT - DOUGLAS



SKANDIA HOUSE - ONCHAN



GREEBA WORKS - DOUGLAS

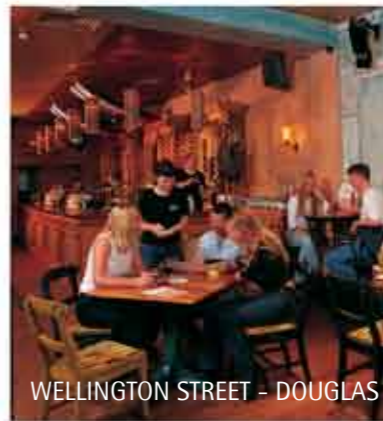
Dandara are pleased to have gained Planning Approval for a prime development of 6,848ft2 net mixed use accommodation constructed within a six storey car park housing 144 No spaces in the heart of the Retail and Commercial centre of Douglas.

Located at the mid point of Market Street, the site is ideally situated in close proximity to the Retail centre of Strand Street and is within a few minutes walk of many Government offices, Financial Institutions, the Law Courts and the supporting Legal offices.

The accommodation which is over two levels comprises of a ground floor plate of 3,898ft2 and a first floor of 2,950ft2. The two floors could be used as one complete unit with the addition of an optional linking staircase. The development is supported by the provision of allocated car parking spaces located within the purpose built multi-storey car park above.



QUAY WEST - DOUGLAS



WELLINGTON STREET - DOUGLAS

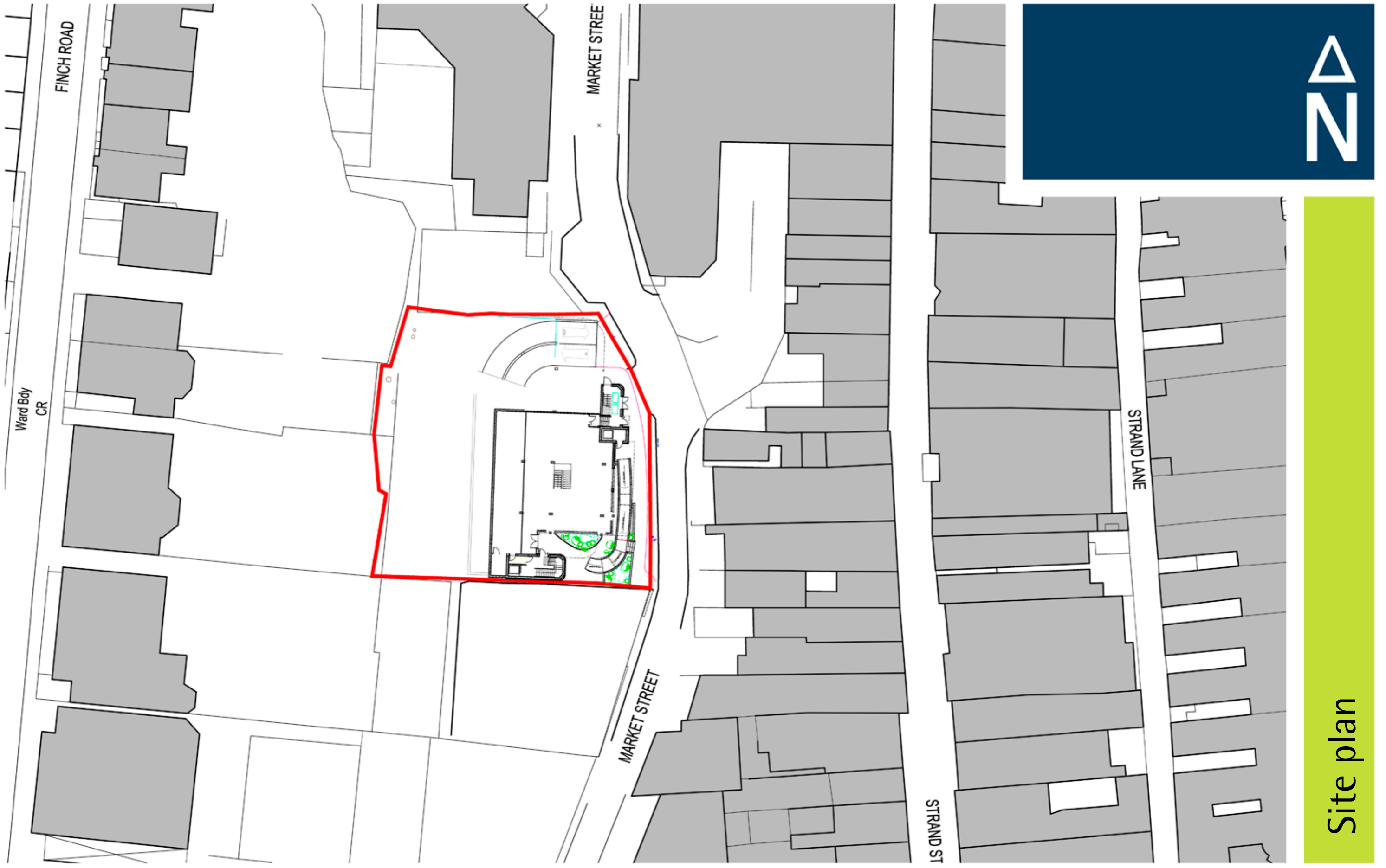


DANDARA GROUP HQ

Project Background

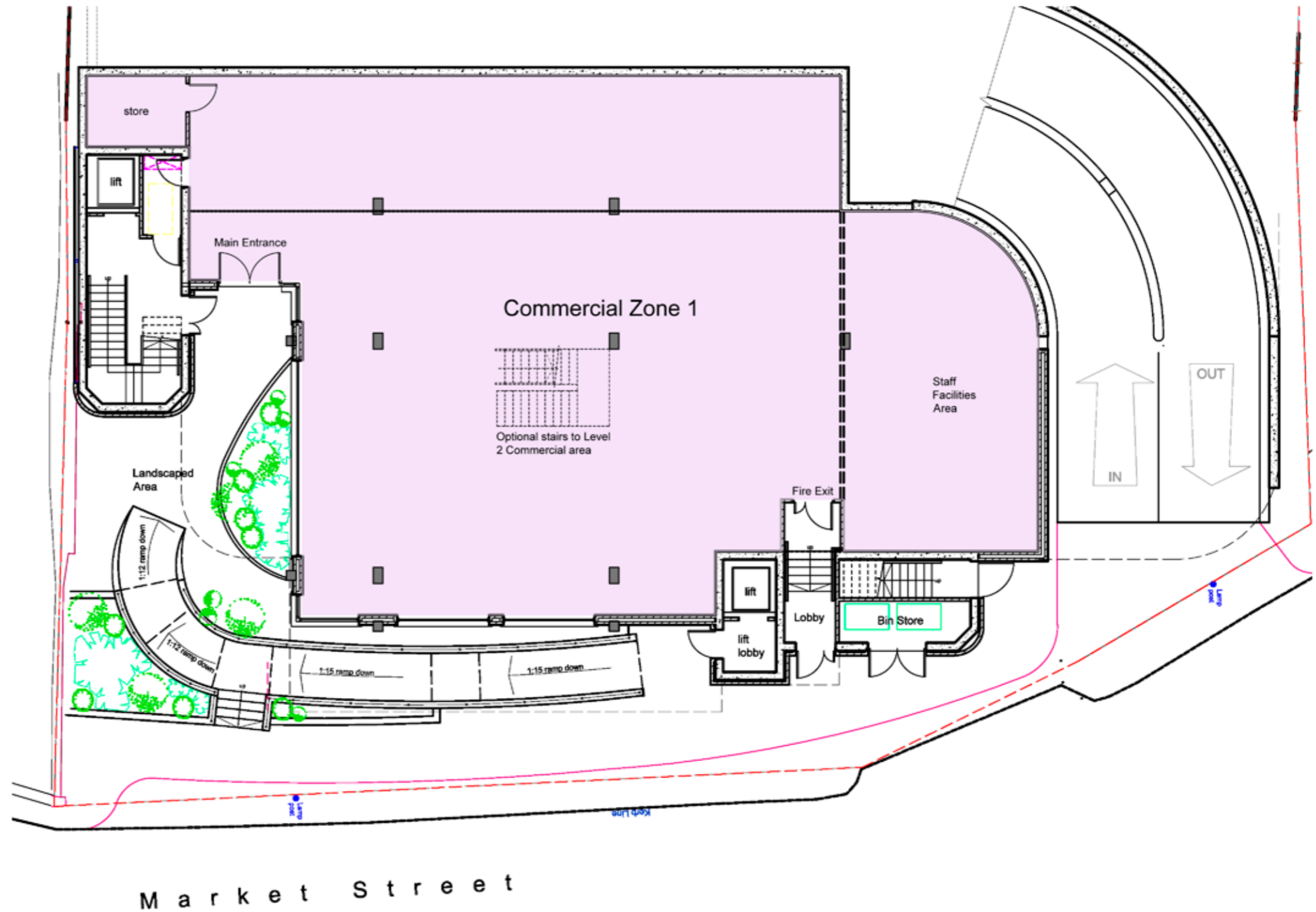
Market Street - Commercial Units 1 & 2





Market Street - Commercial Units 1 & 2

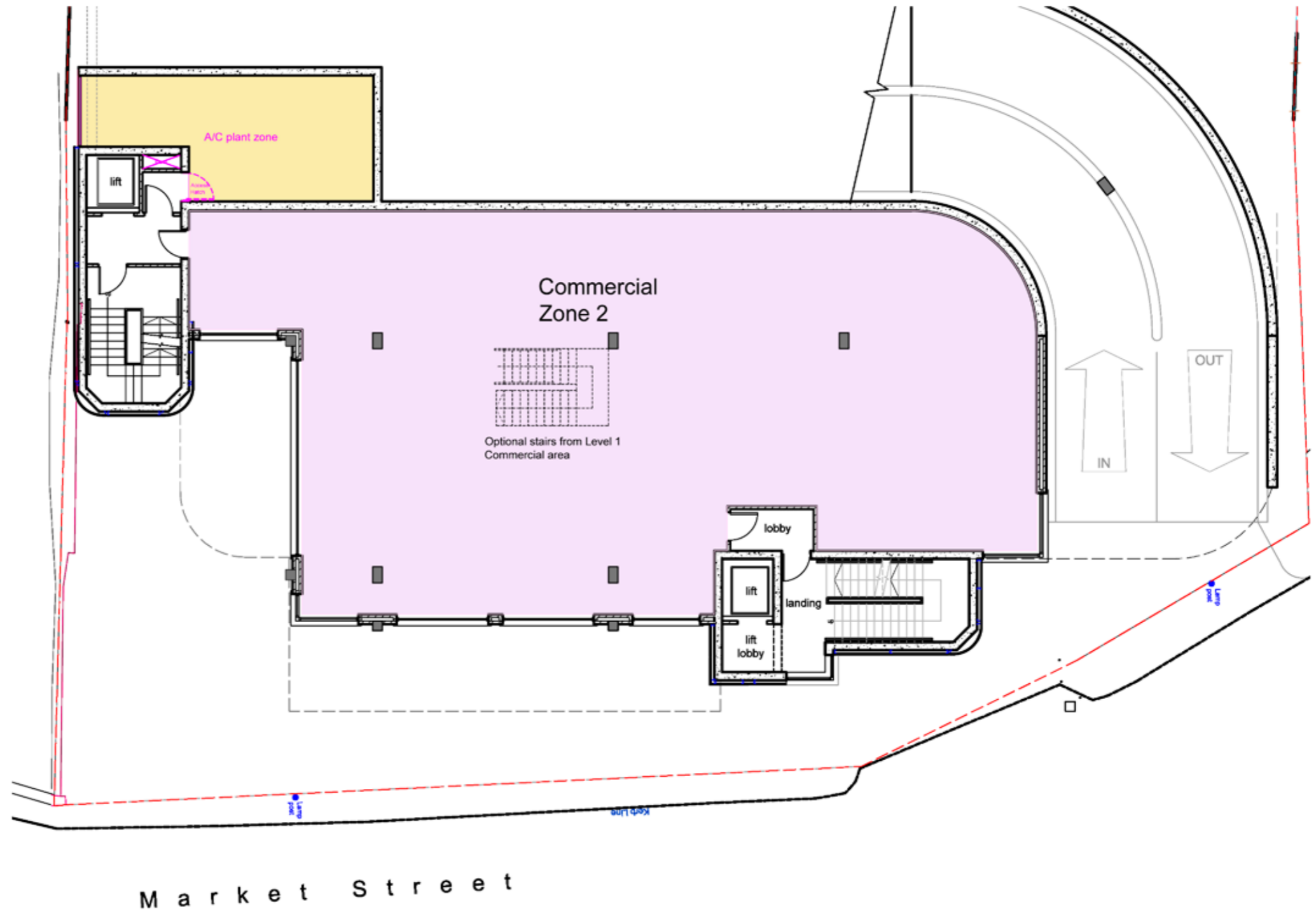
Gross area 3898sq.ft.



Ground floor plan

Market Street - Commercial Units 1 & 2

Gross area 2950sq.ft



First floor plan

Market Street - Commercial Units 1 & 2



CGI - View from the south

Market Street - Commercial Units 1 & 2